

Montexport Cork Group

# Raw Natural Cork Catalogue

未加工的天然软木

Ref. 01/2014

January 3, 2014

Raw Natural Cork  
Towards a more sustainable  
Future





# Our business

Montexport is one of the most diversified comprehensive commodities trading and service Portuguese companies.

Our strategy is to maintain and build upon the position as one of the Portuguese's largest diversified commodities exporters.

Through business development, logistics and trading of Natural Cork resources, we reinforce a comprehensive value chain to secure a stable supply of this resource for both industry and society.

We track interactions between Portuguese Natural Cork Suppliers, which in total produce approximately 50% of cork harvested annually worldwide, to export this commodity across the world.

## Our Mission

We are committed to promoting the trade in Natural Cork as the most sustainable alternative to other alternatives for all its industries

Please find on the next pages the various types of Natural Cork that we supply.

If you want more information and specifications, please contact our department for this business unit.

# Raw Natural Cork – Caliber

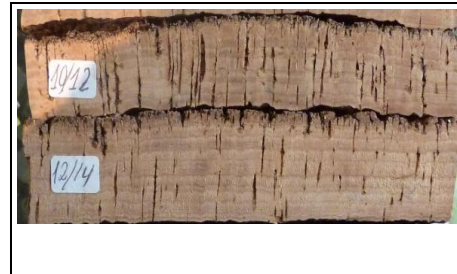
## 软木的厚度

Please find beneath the various Natural Cork calibers that we supply. If you want more information and specifications, please contact our department for this business unit.

<b>C1</b>	<b>Thickness 14-27 Mm</b>
-----------	---------------------------



<b>C2</b>	<b>Thickness 27-40 Mm</b>
-----------	---------------------------



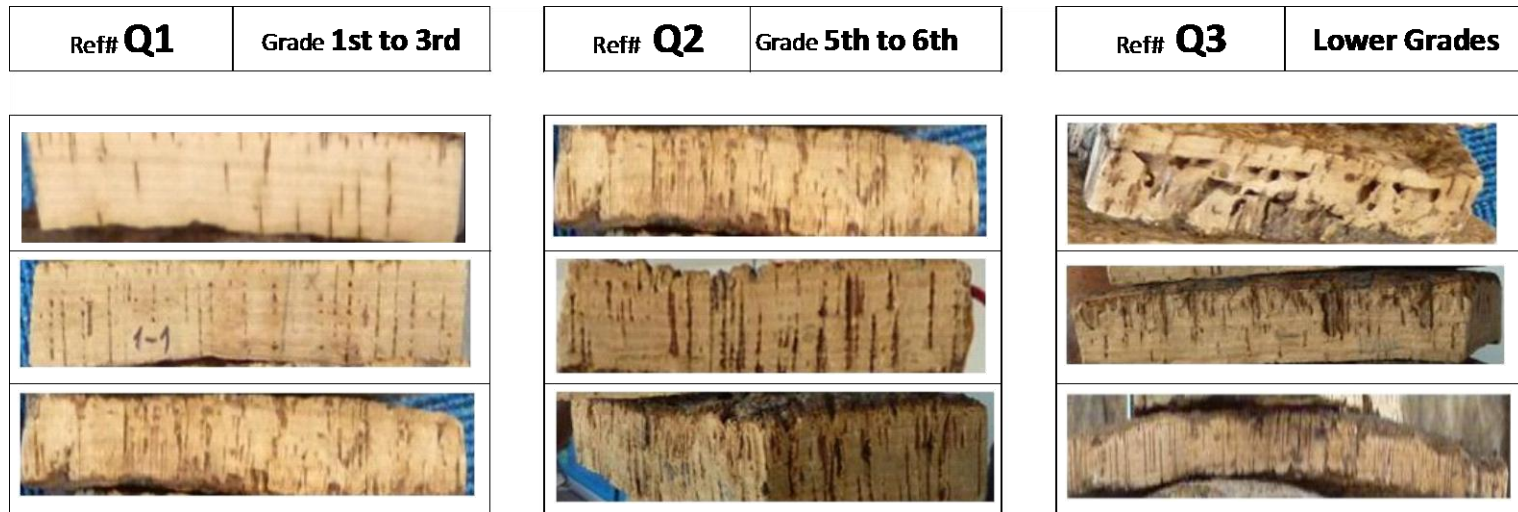
<b>C3</b>	<b>Thickness ≥ 40 Mm</b>
-----------	--------------------------



# Raw Natural Cork – Quality Grades

## 度质量科克

Please find beneath the various Natural Cork Quality that we supply. If you want more information and specifications, please contact our department for this business unit.



# Raw Natural Cork

Please find beneath a chart with the relation between the Caliber and Quality of Natural Cork Quality that we supply. If you want more information and specifications, please contact our department for this business unit.

Cork boards Chart per Caliber, Quality and final Usage			Quality Grade					Cork Refuse
			1st	2nd	3rd	4th	5th	
<b>C a l i b e r</b>	C1	X-Thin	Discs for stoppers 1+1, sparklings and half stoppers			Granulated		
	C1	Thin						
	C2	Half size	Natural cork stoppers					
	C2	Full Size						
	C3	Thick						
	C3	X-Thick						

# Supply Chain Management

## 供应链管理

The competitiveness of our products results from the fact that we provide directly from the manufacturer to our customers, delivering on time, through a strategy for streamlining the deliveries delineated by our shipping department specialized in logistics.







# ...connecting the world

**Montexport, Lda.**

Av. José Malhoa, n.º2, Tardoz – Piso 1 – Gabinete  
1.2, 1070-325 Lisboa

T +351 21 726 4105

F +351 21 726 4092

Carlos da Conceição

@carlos.da.conceicao@montexport.pt

José Remízio

@jose.remizio@montexport.pt

Carlos Montenegro

@carlos.montenegro@montexport.pt

[www.montexport.pt](http://www.montexport.pt)