

Montexport Waste Management Group

# Paper Waste Catalogue

Ref. 09/2019

January 3, 2019

**Waste Management  
Towards a more sustainable  
Future**



# Our business

In a world of increasing pressure on finite resources, historic resource management strategies of single-use, bury or burn are no longer tenable.

Montexport, after a thorough consideration of the needs, trends and opportunities in the recycling business, has developed a new business model for a sustainable future by combining a global business network, and its experience of more than 30 years in international trade.

The core business of waste management is the program designed to acquire, collect and transport the paper scrap along with public and private Operators of Solid Waste in European space, and subsequent distribution to several accredited recyclers worldwide.

## Our Mission

Our approach to recycling is based on a belief that recycling is no longer an option: it is the way to the future.

Please find on the next pages the various types of paper waste that we supply.

If you want more information and specifications, please contact our department for this business unit.



# Paper Waste for Sell

Please find beneath the various products we supply. If you want more information and specifications, please contact our department for this business unit.



Type of Paper: OCC 98/2  
OCC 98%, 2% of other paper mixed with OCC



Type of Paper: OCC 95/5  
OCC 95%, 5% of other paper mixed with OCC



Type of Paper: OCC 90/10  
OCC 90%, 10% of other paper mixed with OCC



Type of Paper: Boards on Pallets

# Paper Waste for Sell

Please find beneath the various products we supply. If you want more information and specifications, please contact our department for this business unit.



Type of Paper: Cup stock paper



Type of Paper: KCB Kraft



Type of Paper: Magazines & Newspapers



Type of Paper: Mix Printer



# Paper Waste for Sell

Please find beneath the various products we supply. If you want more information and specifications, please contact our department for this business unit.



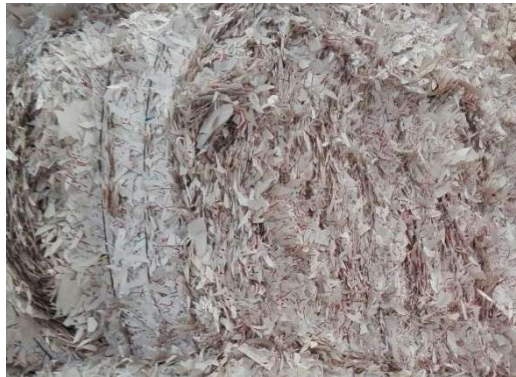
Type of Paper: Cigarette Case Stock Paper



Type of Paper: Tissue Paper



Type of Paper: White Shavings



Type of Paper: Tobacco Shavings

# Our contacts

## Europe

### Montexport Portugal

Av. José Malhoa, n.º2, 1 Floor, Gab 1.4. , 1070-325 Lisbon, Portugal

Telephone: +351 21 726 4105 Fax: +351 21 726 4092

#### Email:

Carlos da Conceição

[carlos.da.conceicao@montexport.pt](mailto:carlos.da.conceicao@montexport.pt)

José Remízio

[jose.remizio@montexport.pt](mailto:jose.remizio@montexport.pt)

Carlos Montenegro

[carlos.montenegro@montexport.pt](mailto:carlos.montenegro@montexport.pt)

© Copyright 2019 Montexport, Ltd.

Although Montexport, Ltd. has endeavored to ensure that the information presented herein are accurate and updated, the Company accepts no responsibility for any error, omission or misrepresentation. Montexport, Ltd. and / or its affiliates assume no liability for any direct, indirect or consequential damages that may arise from the use of the information contained herein. Reproduction or redistribution of this material without the prior written permission of Montexport, Ltd. is prohibited.



...for a better environment

[www.montexport.pt](http://www.montexport.pt)